

Corrib Gas Pipeline Community Update

FEBRUARY 2007

Inside:

Tell us your views

page 3

Who are RPS?

page 4

Feedback Form

page 6

Why get involved?

page 7

Project Timeline

page 8

What's Happening?

Following recommendations made in the Peter Cassells' Report, Shell E&P Ireland (SEPIL) is committed to modifying the route of the onshore section of the Corrib Gas Pipeline.

RPS consultants have been appointed to undertake this rerouting process and, together with SEPIL, will ensure that the consultation process with landowners, local residents and the broader community is fully inclusive and thorough.

The first step is to find out what criteria local people want considered when the proposed routes for the pipeline are being selected.

We will be considering issues such as health & safety concerns and the environment. We would like to hear from you what other criteria you would like taken into consideration.

All feedback received will be used by the technical project team to inform their decision on selecting the most appropriate route.

Read on to find out the many ways in which you can have your say...



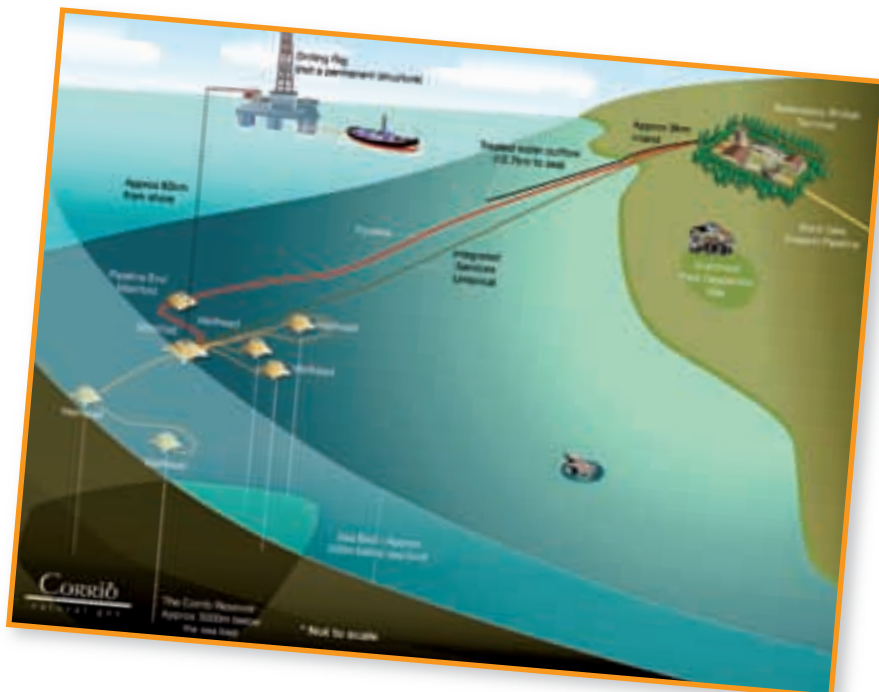
Produced by:
RPS Project Office, Seafield House
Belmullet, Co Mayo

T 097 20720
E routeinfo@rpsgroup.com
www.corribgas.ie

Background and facts

The Corrib Gas Project

- The Corrib Natural Gas Field lies approximately 80km off the coast of Mayo. It was discovered in 1996 by Enterprise Oil, which was acquired by Shell in 2002.
- The Corrib gas field was discovered in 350 metres of water with the gas reservoir a further 3000 metres below the seabed.
- By global standards the Corrib gas field is a medium sized field, estimated to contain approximately two thirds the amount of gas contained in the Kinsale Head gas field. It will supply up to 60% of Ireland's gas needs during peak supply and is estimated to have a field life of between 15 and 20 years.
- Corrib gas will be developed using sub sea technology tied back to an onshore gas terminal. This means that once the wells are drilled there will be no need for a permanent platform structure in place as the wells will be controlled from land. This is best practice for a field of this type and size and is similar in design to some of the most modern gas field developments in Europe such as the Ormen Lange field in Norway. The image below shows an overview of how the Corrib field will be developed. For further details please see www.corribgas.ie or contact SEPIL's local information office on 1800 201 525



Route selection criteria ***Tell us your views***

We encourage you to participate in the identification of route selection criteria so that you can make your views known to the design team before the proposed routes are selected. There are several different outlets for you to have your say:

Workshop on Route Selection Criteria— Saturday 31st March, Venue TBC

We are holding a workshop to provide an opportunity for in-depth community discussion on route selection criteria under a number of headings such as environment, health & safety, community, etc. The format will be facilitated group discussions with about 7 or 8 people in each group so that every participant has an opportunity to make their views known.

If you would like to participate please contact us at 097 20720 or email routeinfo@rpsgroup.com before March 19th. We will hold more than one workshop if there is sufficient demand.

One-to-One Meeting

If you would like to talk directly to the RPS project team regarding route selection criteria we'd be happy to meet you at our project office in Belmullet. Please call 097 20720 to make an appointment Monday to Friday, 9am to 5pm.

Feedback Form

Fill out the feedback form at the back of this brochure and return it to the RPS project office in Belmullet before 13th April.

Phone or Email

You can also tell us your views on route selection criteria by calling or emailing the team.

Phone: 097 20720 Email: routeinfo@rpsgroup.com

Website

Log onto the Corrib Gas Project website, www.corribgas.ie where there is an feedback form to email your views on route selection criteria.

RPS

Who we are

A number of family run Irish companies, each with a strong track record of environmental consultancy for the public and private sectors, came together under the global RPS umbrella in 2005. MC O'Sullivan Consulting Engineers, McHugh Planning, Kirk McClure Morton and EEL are now RPS, Ireland's largest planning, engineering and environmental consultants.

For further information visit www.rpsgroup.ie



Members of the RPS Corrib team

- The company has over 25 years experience in gas pipeline routing and environmental assessment (working for *Bórd Gáis Éireann*).
- Nationally, RPS are key policy advisors on Roads, Water, Energy, Waste Management, Marine Harbours, Airports and River Management.
- We do a lot of work for the Environmental Protection Agency (EPA) and the Department of the Environment Heritage and Local Government on environmental policy formulation.
- We have a long working relationship with Irish local authorities.
- We were consultants for the Race Against Waste and work closely with Sustainable Energy Ireland.
- RPS employs over 1,000 staff in 13 offices throughout Ireland.
- In the West we have several major projects underway, including Galway to Ballinasloe Motorway, Charlestown Bypass, Lough Talt (Sligo) Regional Water Supply Scheme and Kiltimagh Sewerage Scheme.

Our role

RPS will work with SEPIL to assist in choosing a modified pipeline route that has landowner agreement and community acceptance. We have been awarded the Engineering Management and Support Services (EMSS) Contract which includes a full range of technical services to complete the rerouting, planning, environmental assessment, permitting and construction management of the onshore pipeline from the landfall to the reception terminal at Bellanaboy.

Throughout the provision of these technical services RPS will also be involved in community consultation to ensure that the interests of the local residents are taken into consideration in relation to the rerouting of the onshore pipeline.

Public consultation **Why participate?**

All submissions made and feedback collected during the public consultation on route selection criteria will be used by the technical project team to inform their decision on selecting the most appropriate route.

RPS will present a summary of all feedback and submissions received at a public open day in April (2007). We assure all those making submissions that their identity will remain confidential.

ONGOING CONSULTATION

- Throughout the pipeline routing process, RPS, together with SEPIL, will carry out extensive engagement with landowners, residents, the local community and statutory bodies.
- It is likely that there will be many queries you would like addressed by the project team as the route selection process progresses. We have therefore set up a dedicated phone line and email service for you to put queries to the project team and we will make every effort to deal with your queries within 48 hours.

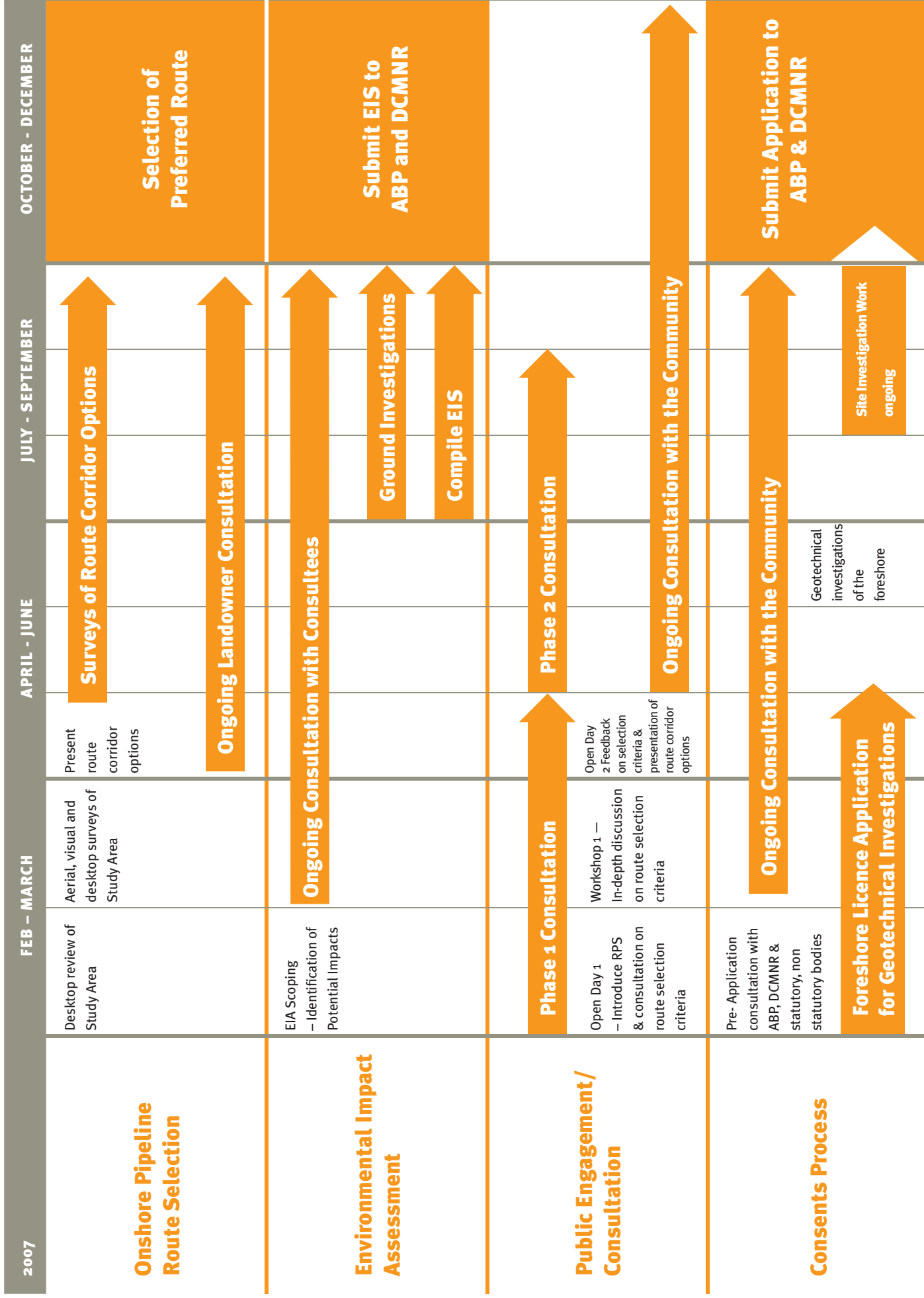
Phone: 097 20720 Email: routeinfo@rpsgroup.com

- There is also a Corrib Gas Project website, www.corribgas.ie, that will be kept up-to-date with details about the role of RPS and the community consultation.



RPS has carried out public consultation for major infrastructural projects throughout Ireland for over 20 years





Tell us your views

We will be studying Environmental, Health & Safety and Community impacts when preparing proposed route selections for the onshore Corrib gas pipeline. Please tell us your views or include any other comments you have on the rerouting process.

Please return this form to RPS Project Office, Seafeld House, Belmullet, Co. Mayo before 13th April.

Contact details (Optional)

NAME

ADDRESS

TELEPHONE NUMBER

E-MAIL:

Please tell us your views ...



Postage will be paid
by Licensee



RPS Project Office
Seafeld House
Belmullet, Co Mayo