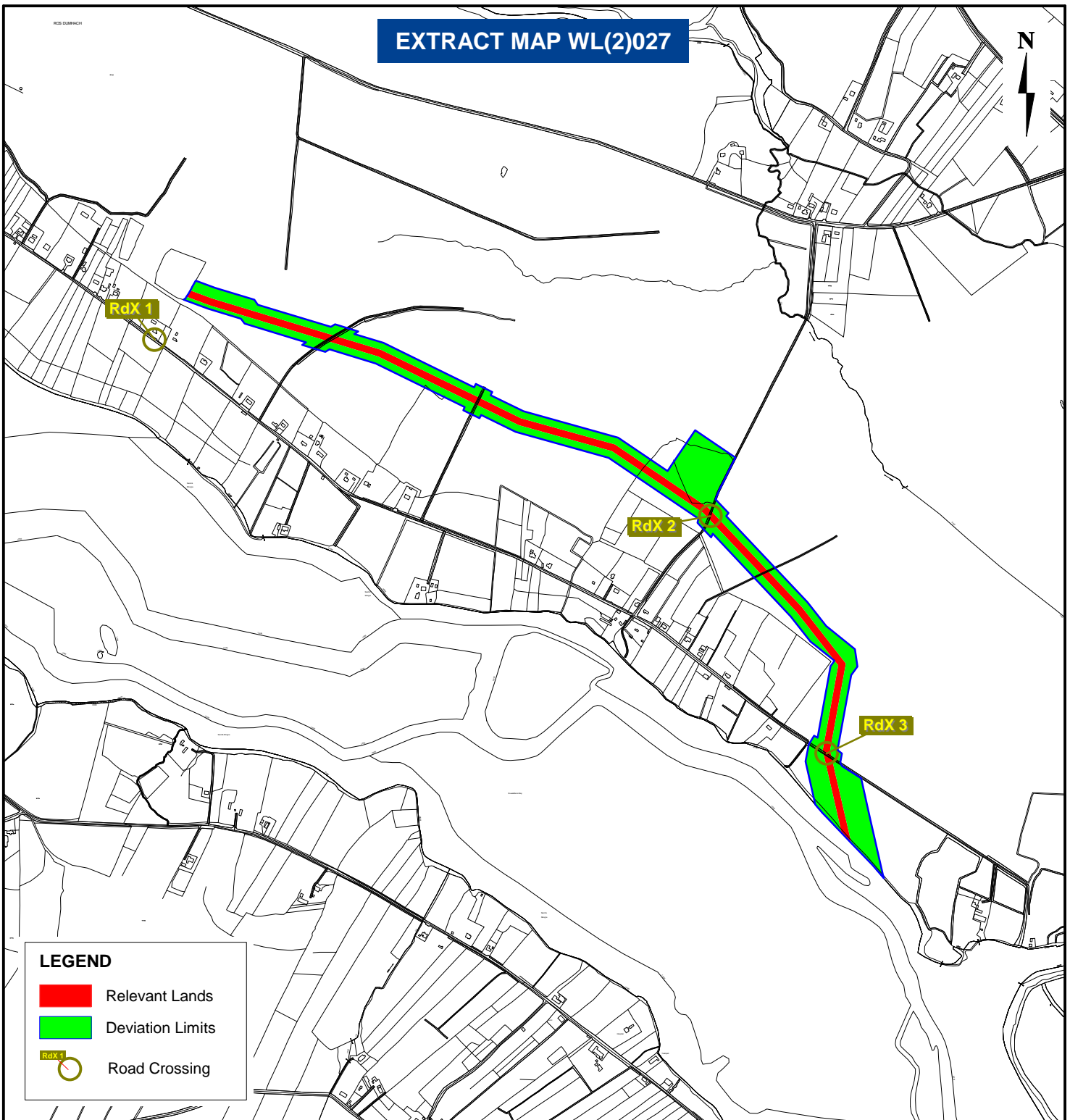


EXTRACT MAP WL(2)027



LEGEND

- Relevant Lands
- Deviation Limits
- Road Crossing

GAS ACT, 1976 (as amended), CORRIB ONSHORE PIPELINE ACQUISITION ORDER 2009

Compulsory Acquisition Order under Section 32 (1A) of the Gas Act, 1976 as inserted by Section 20(5) of the Gas (Amendment) Act, 2000 as substituted by Regulation 2 of the European Communities (Internal Market in Natural Gas) (Compulsory Acquisition) Regulations, 2001 as subsequently substituted by Section 23(1)(g)(i) of the Gas (Interim) (Regulation) Act, 2002 and as adapted by Section 215A of the Planning and Development Act, 2000 as inserted by Section 37 of the Planning and Development (Strategic Infrastructure) Act, 2006

Application by Shell E&P Ireland Limited for Acquisition Order and for Confirmation of Deviation Limits

Project: CORRIB ONSHORE PIPELINE



Corrib Field Development Project
Shell E&P Ireland Limited
Corrib House,
52 Leeson Street Lower,
Dublin 2

Note:

- Pipes to be laid in the trench
1. Steel product pipe (508mm Ø)
 2. Outfall pipe (dia. 250mm)
 3. Duct for Fibre Optic cable (dia. 63mm)
 4. Duct for Copper cable (dia. 63mm)
 5. Umbilical #1 (dia. 62mm)
 6. Umbilical #2 (dia. 81mm)
 7. Umbilical #3 (dia. 81mm)

Drawing Reference:
WL(2)027A03

Revision:
A03

OS Ref No(s):
0935, 0936, 0992

Scale:
1:15,000

Date:
May 2009

Drawn by:
S.K.

Checked by:
C.W.

Approved by:
G.C.

Based on Ordnance Survey Ireland by permission of the Government
Ordnance Survey Ireland Licence No EN 0005009
©Ordnance Survey Ireland and Government of Ireland

